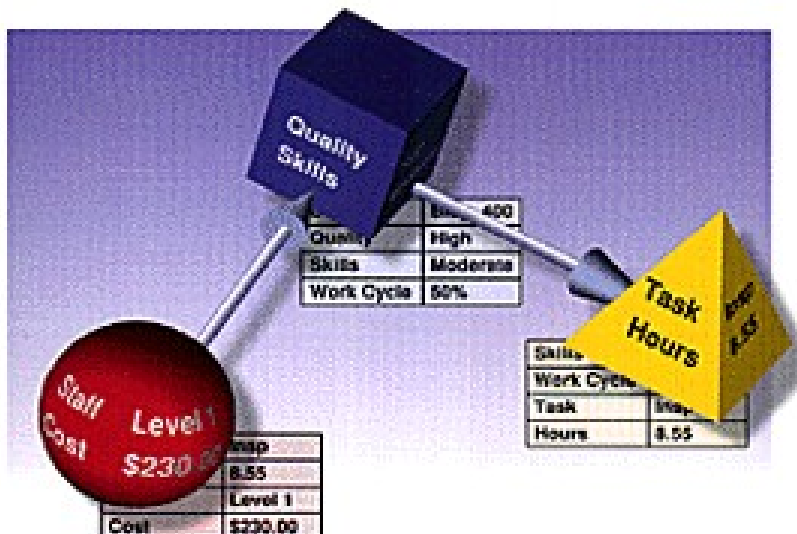



Easy Flowcharting for Microsoft[®] Office



Microsoft Office Compatible
Links and Works with the Microsoft Office



Quality Skills

Quality	High
Skills	Moderate
Work Cycle	50%

Staff Cost

Level 1	Map
	8.55
Level 1	
Cost	\$230.00

Task Hours

Skills	Map
Work Cycle	8.55
Task	
Hours	8.55

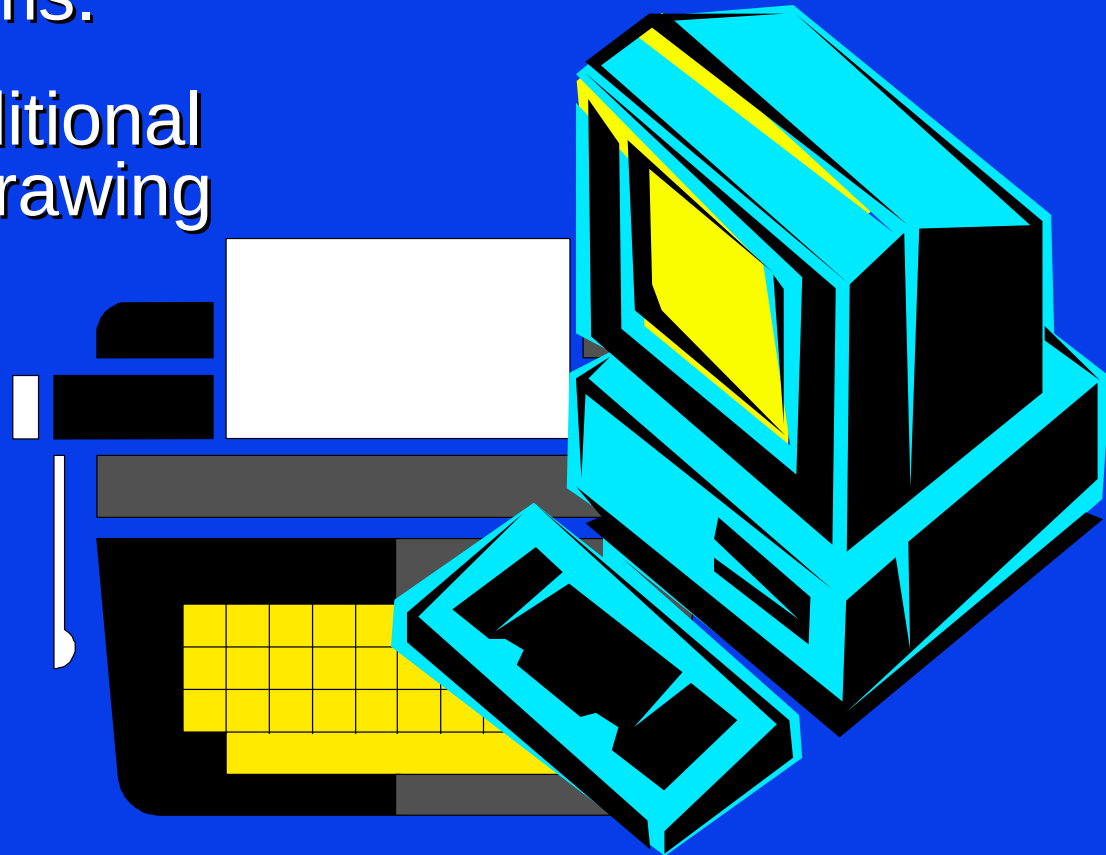
FLOWMODEL™

More than a picture. More than just a flowchart.™

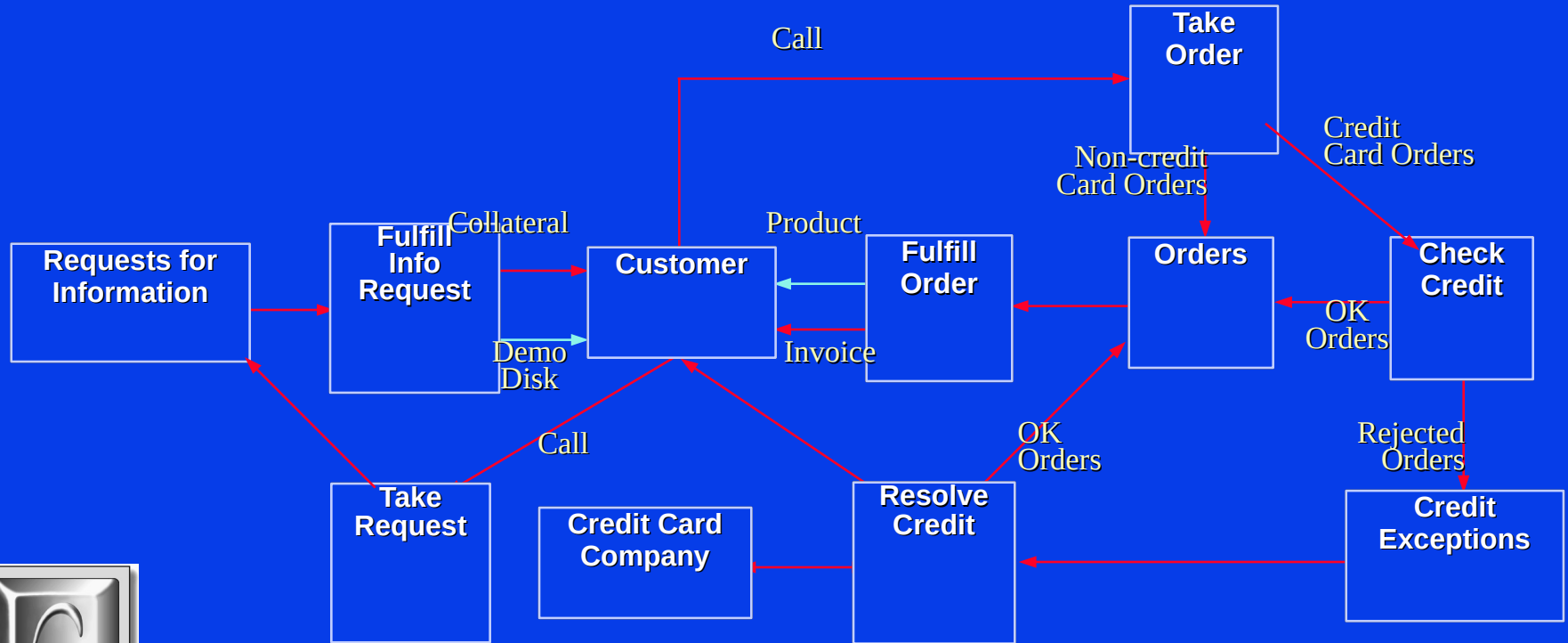
FlowModel™

is a Microsoft Office compatible flowcharting tool that . . .

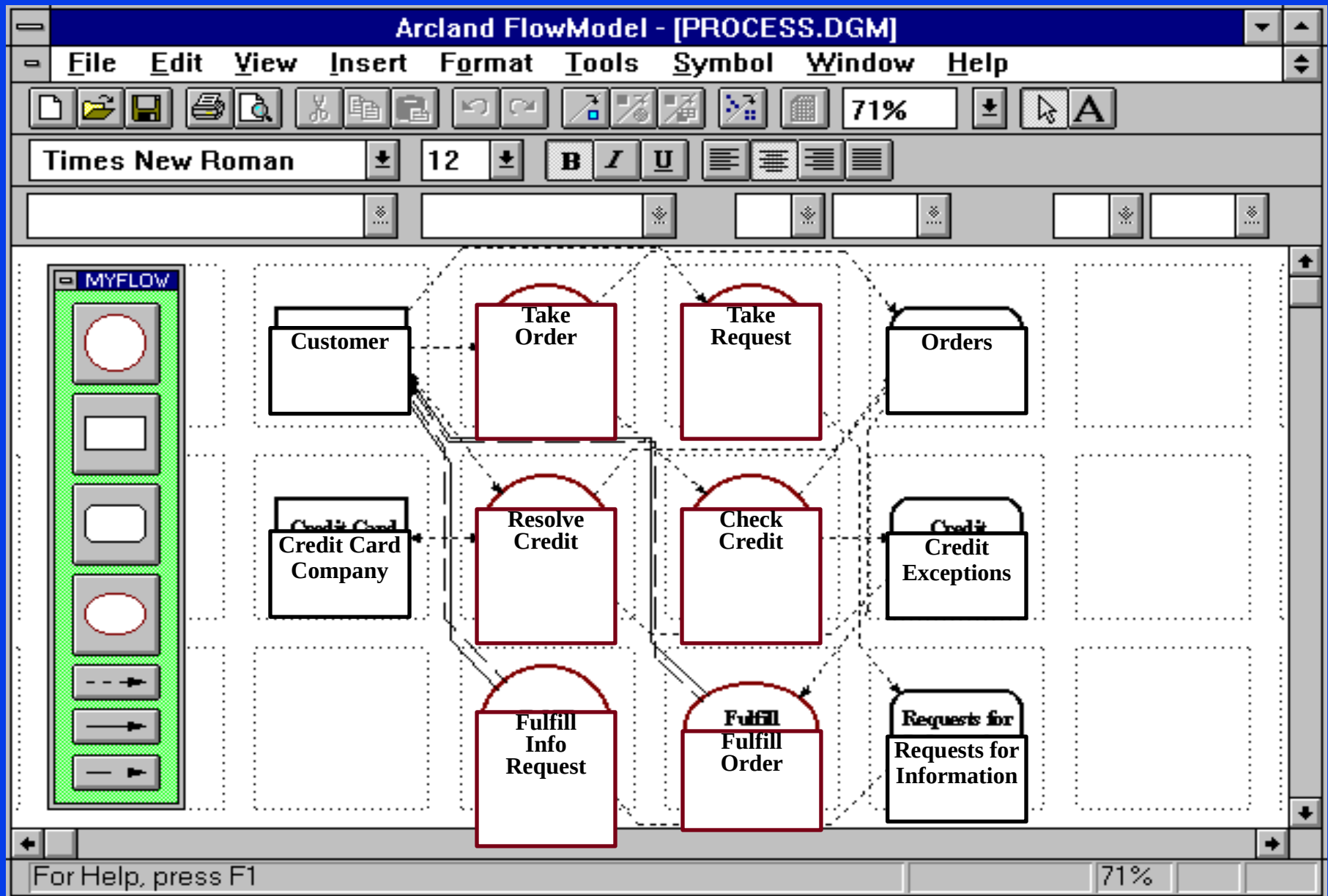
- Radically simplifies the process of creating and revising flowcharts and similar diagrams.
- FlowModel is to traditional flowcharting and drawing tools like a word processor is to a typewriter.



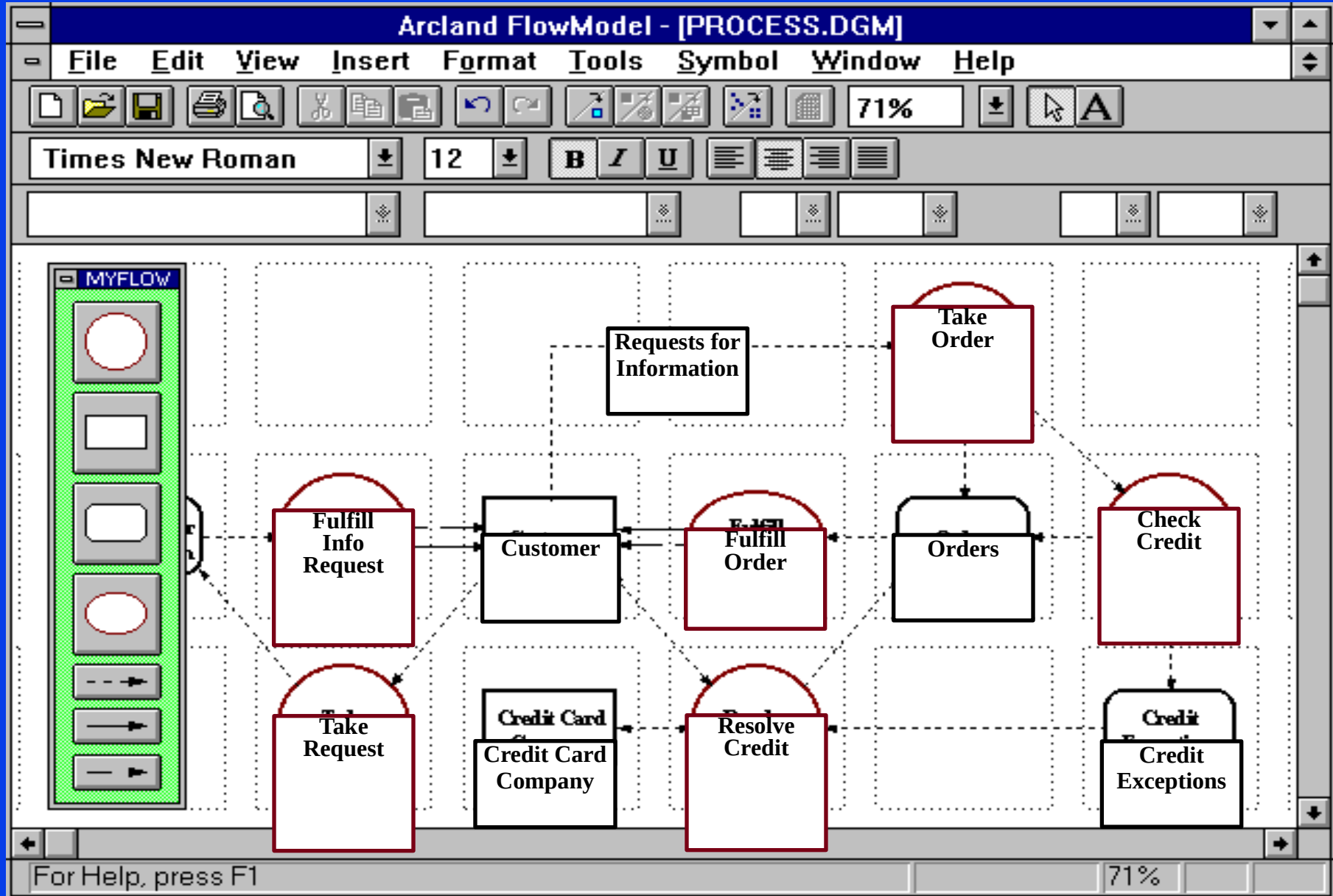
Everyone agrees flowcharts and diagrams are the best method to communicate the essence of the processes and systems with which you work.



But only FlowModel can turn this . . .

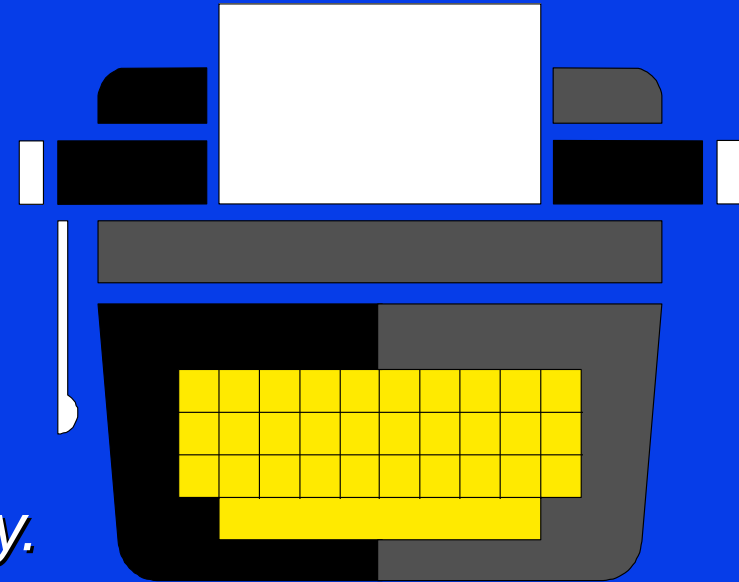


... into this, at the press of a button.



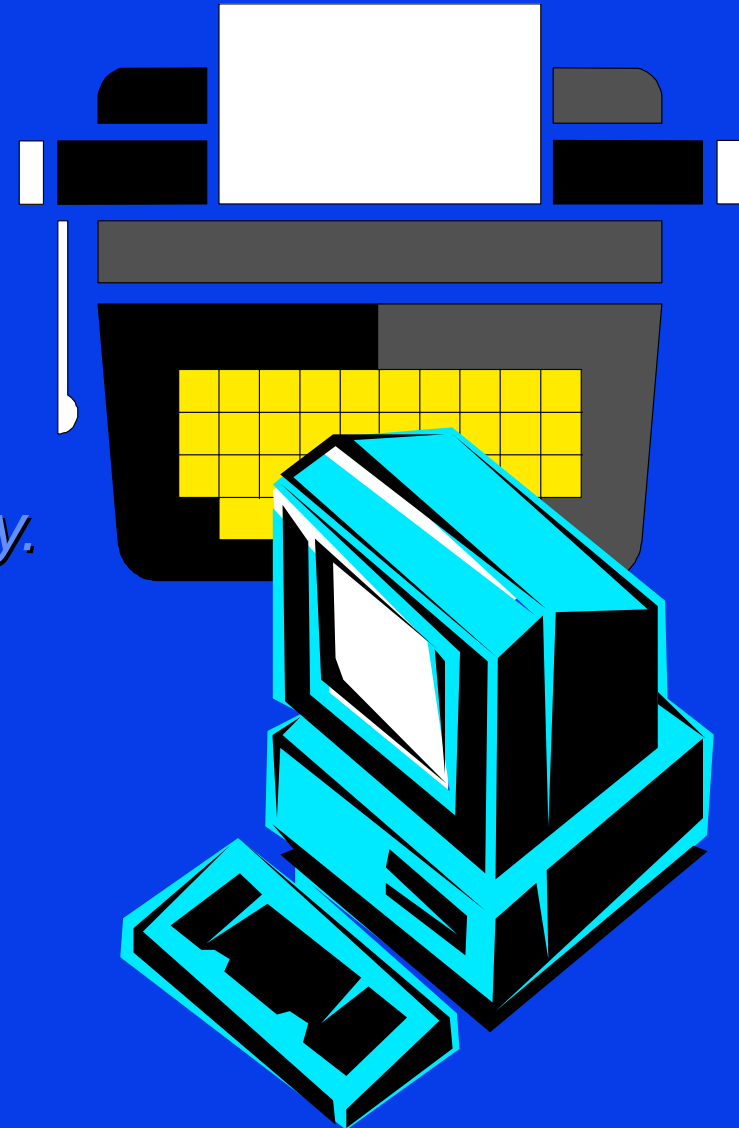
FlowModel

- With typewriters, you had to know what your documents were going to look like before you started and you had to very laboriously retype them as you revised your work.
- *Traditional flowcharting and drawing tools are the same way.*



FlowModel

- With typewriters, you had to know what your documents were going to look like before you started and you had to very laboriously retype them as you revised your work.
- *Traditional flowcharting and drawing tools are the same way.*
- FlowModel is to traditional flowcharting tools like the word processor was to the typewriter.

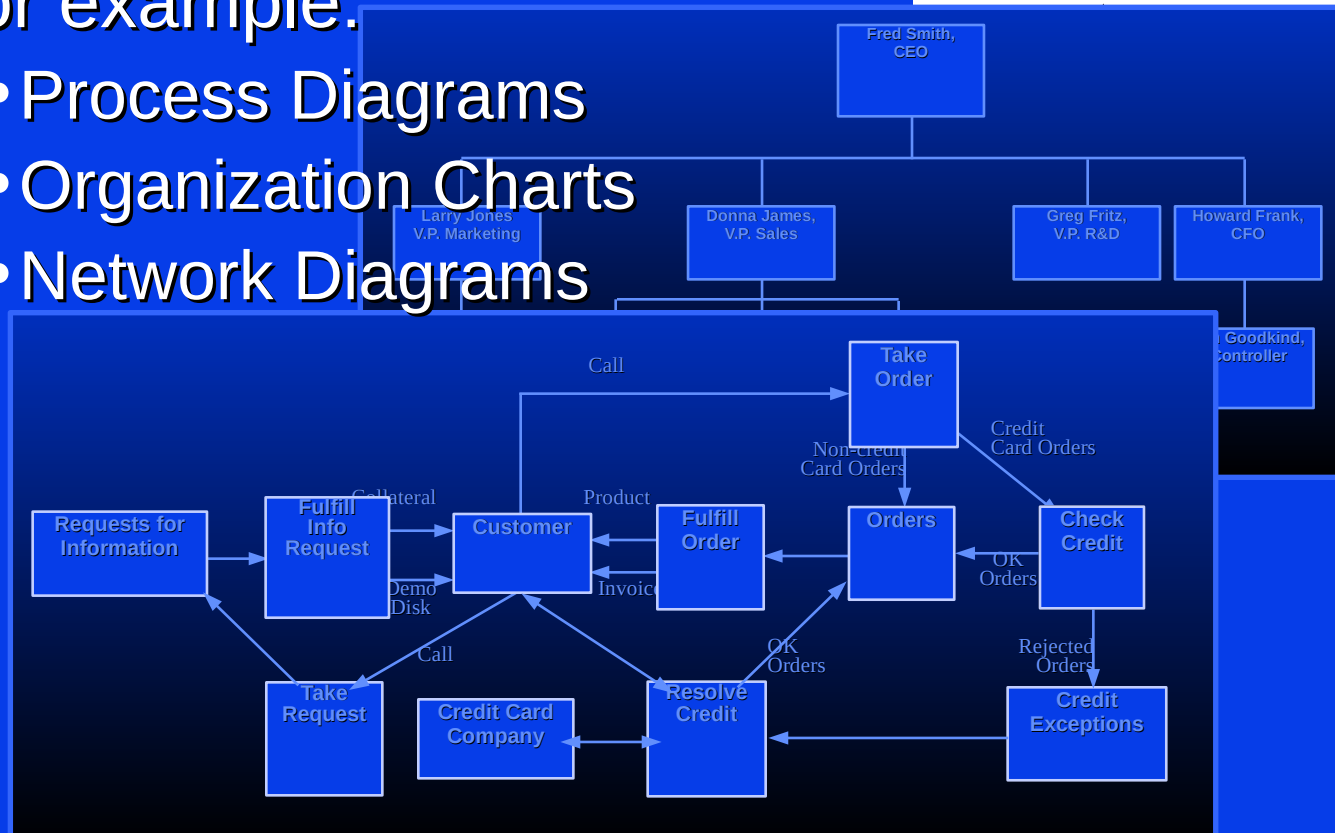
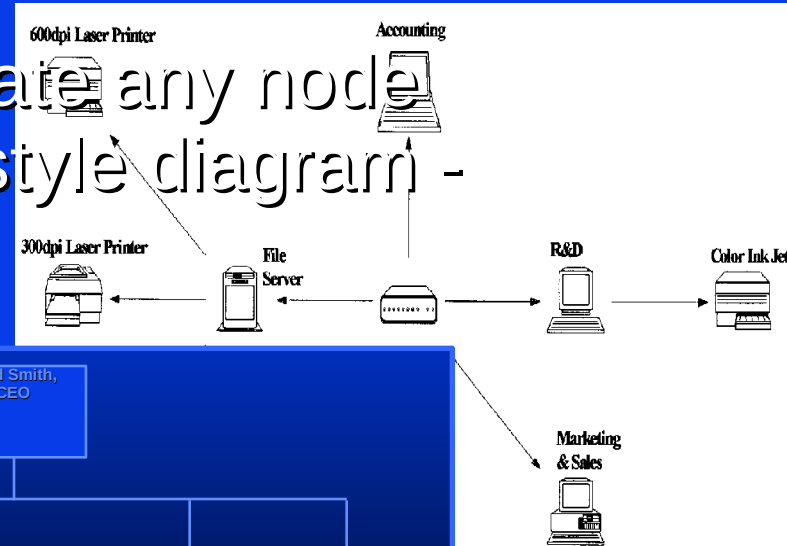


More than just flowcharts . . .

- With FlowModel, you can create any node and link, or box and arrow, style diagram - not just flowcharts.

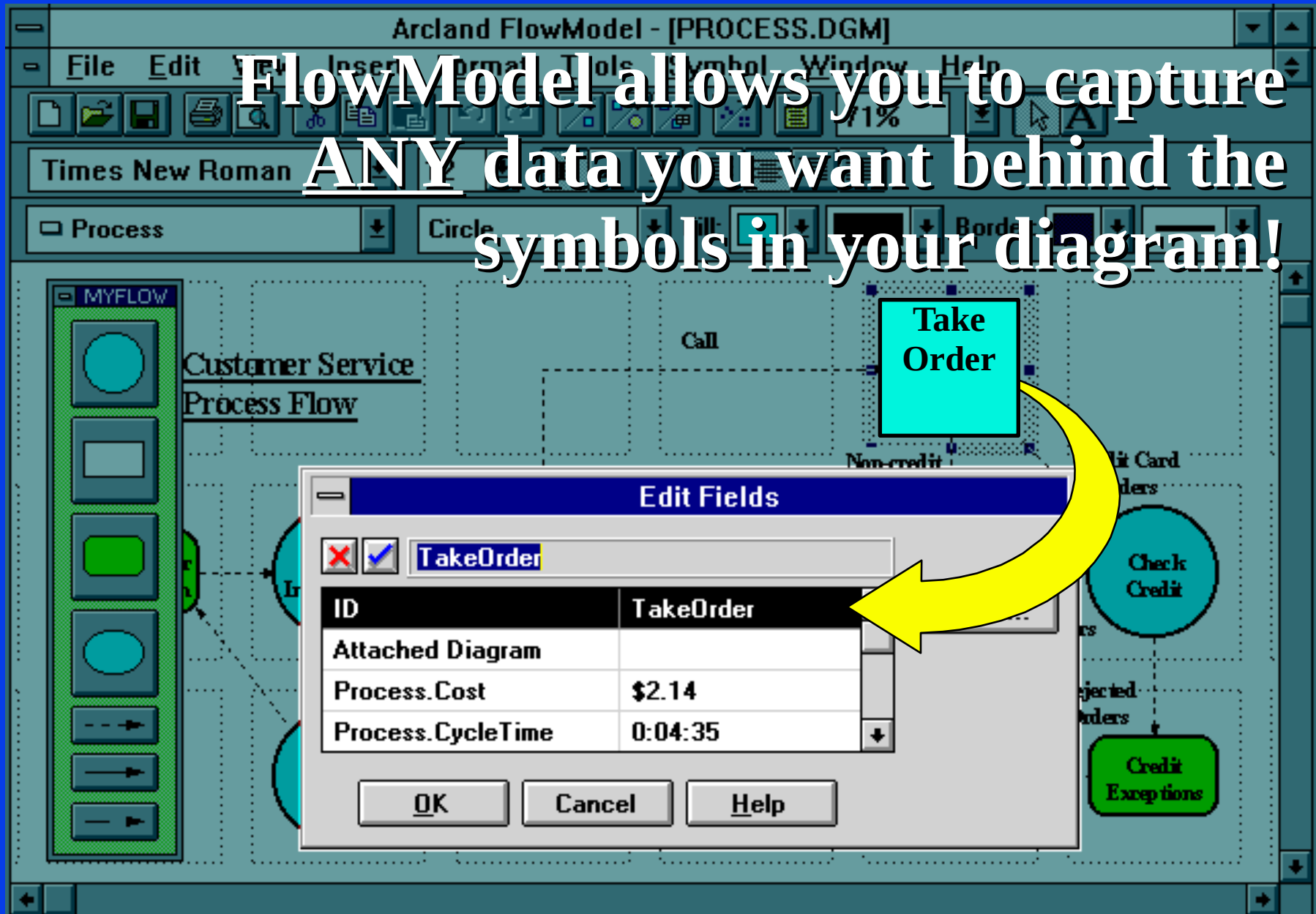
- For example:

- Process Diagrams
- Organization Charts
- Network Diagrams



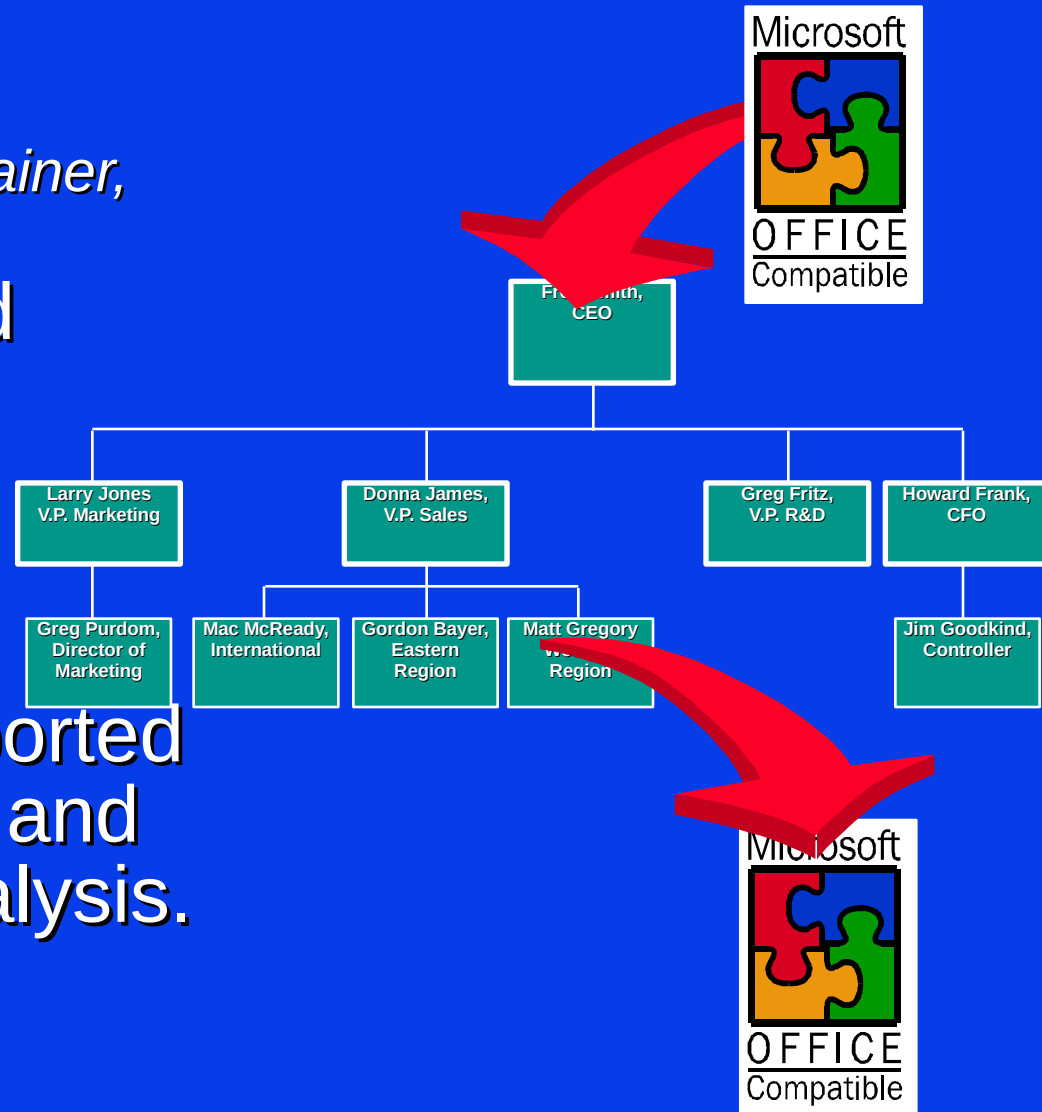
More than just a picture . . .

FlowModel allows you to capture ANY data you want behind the symbols in your diagram!



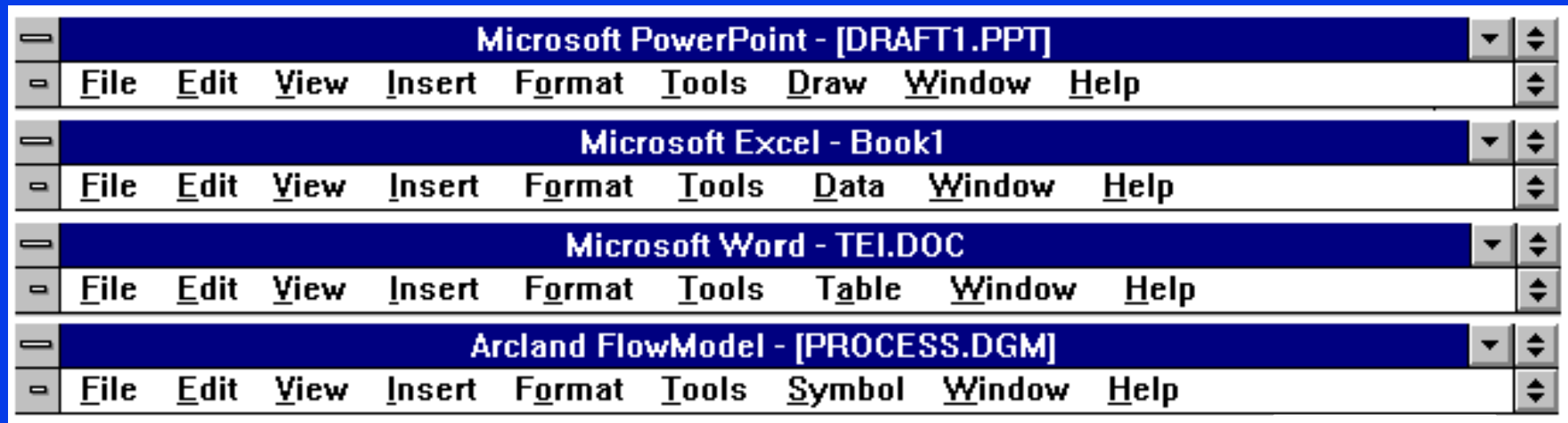
Microsoft Office Integration

- FlowModel 2.0 fully supports OLE 2.0.
FlowModel is an OLE container, and an OLE server.
- Data can be imported from MS Access.
For example, FlowModel can automatically draw a chart using data exported from Microsoft Access.
- Data can also be exported to Microsoft Access and Excel for further analysis.



Microsoft Office Compatibility

FlowModel's title bars, toolbars and menus look and work just like your favorite Microsoft Office applications.



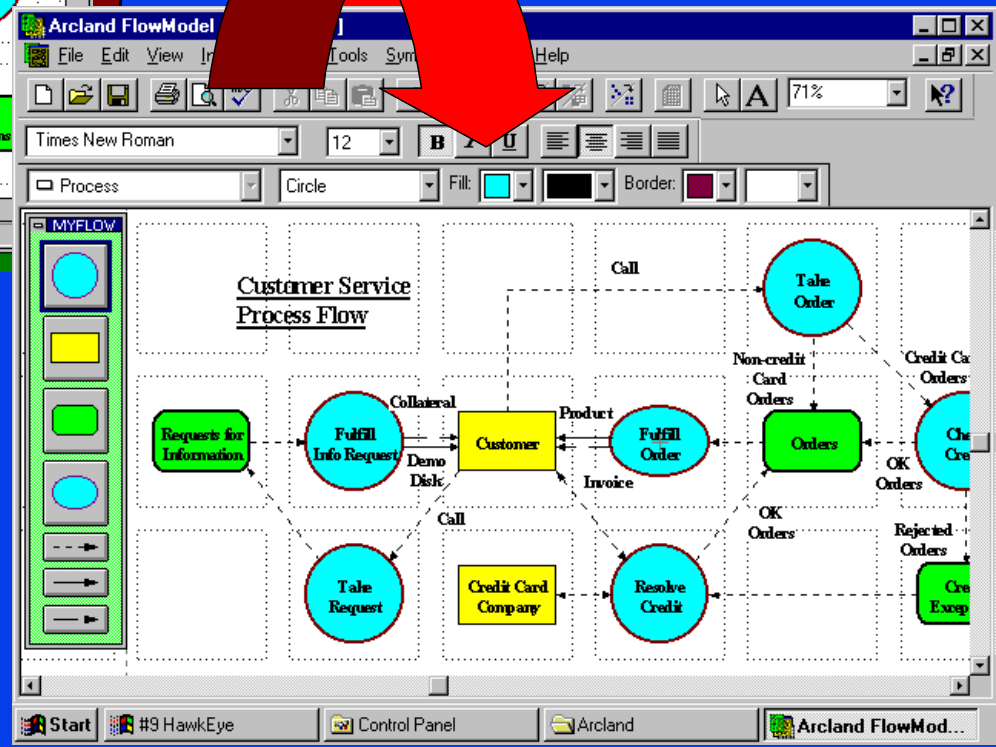
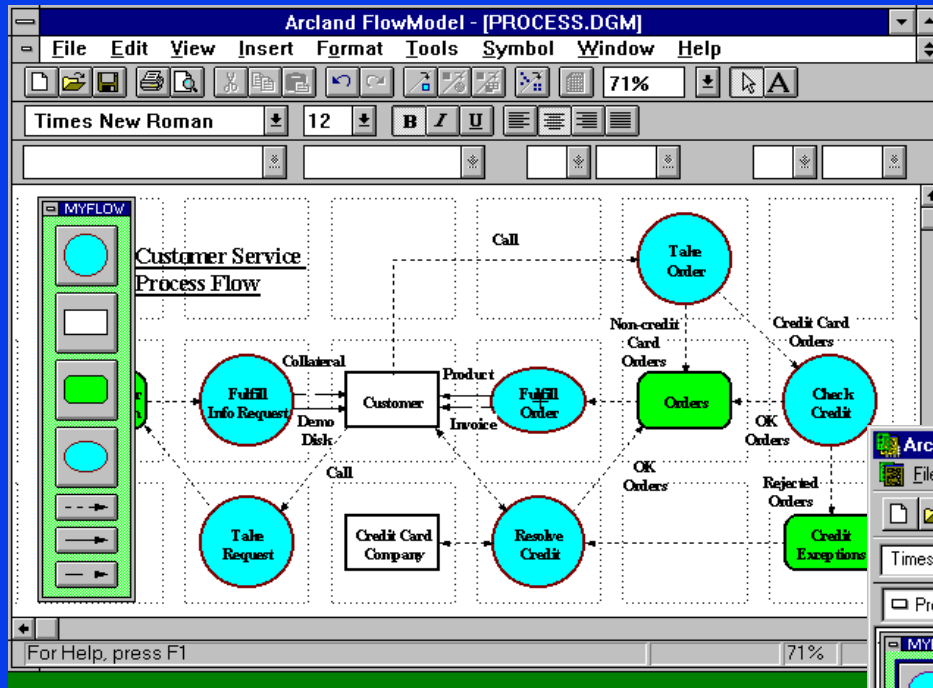
FlowModel 2.0 is available on:

Windows 3.1

Windows for Workgroups

Windows NT

Windows 95



What the critics say . . .

“Even with a crowded field, Arcland Inc.’s FlowModel holds the advantage over drawing programs and first-generation flowchart packages. There are no awkward drawing tools, plus FlowModel lets you utilize the data behind your model.”



February 27, 1995



What the critics say . . .

“[FlowModel] is simplicity itself.”



May, 1995



FlowModel is the perfect flowcharting and diagramming complement to Microsoft Office!

Microsoft Office Compatible
Looks and Works Like Microsoft Office

Arcland

Quality Skills

Quality	High
Skills	Moderate
Work Cycle	50%

Staff Cost Level 1 \$230.00

Map	8.55
Level 1	
Cost	\$230.00

Task Hours \$55

Skills	
Work Cycle	
Task	
Hours	8.55

FLOWMODEL™

More than a picture. More than just a flowchart.™

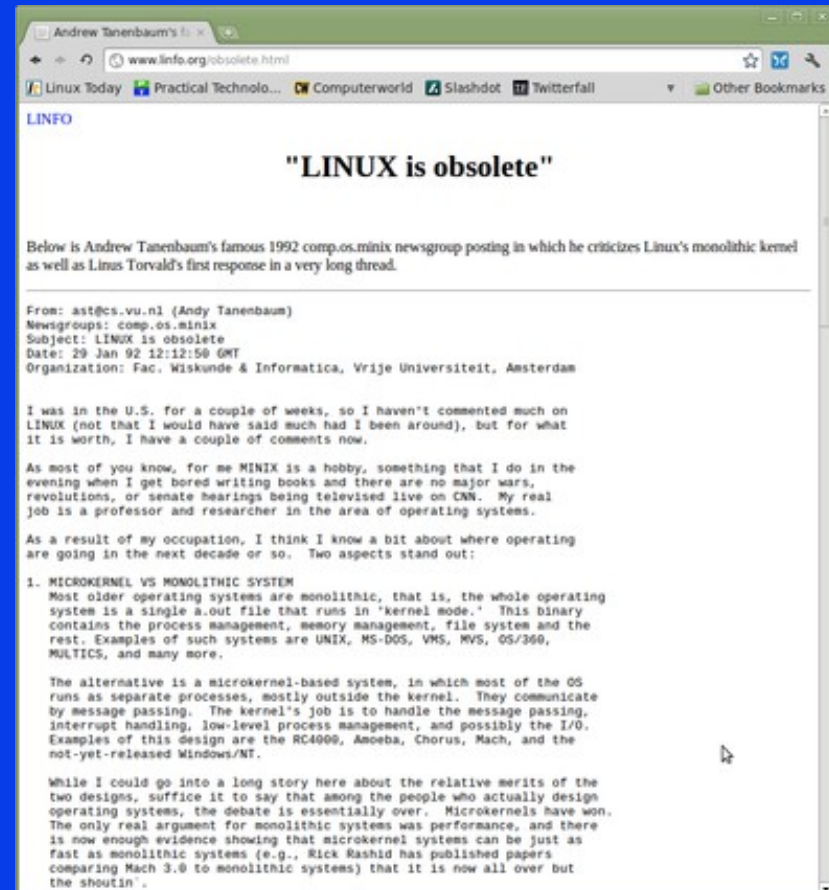


Please call
800-276-9993
to place an order or
request more information
or

visit our Internet home page at

[HTTP://WWW.ARCLAND.COM/FLOWMODEL](http://www.arcland.com/flowmodel)

Installing Linux on a 486 DX4 75MHz PC in 2019



First attempt

• Debian 1.1 Buzz

- Why Debian 1.1? Because I knew it would run and installs from floppy disks (doesn't appear to even offer an ISO)
- Released on June 17th, 1996 as Debian GNU/Linux 1.1
- First Debian release to take its name from the Toy Story movies... in this case, Buzz Lightyear!
- This release was fully ELF, used Linux kernel 2.0, and contained 474 packages.
- It is now obsolete and security updates are no longer provided.
- Installation steps:
 - http://debian.ues.edu.sv/debian-archive/debian/dists/Debian-1.1/main/disks-i386/1996_6_16/install.txt



The Installation Root Disk

The system should emit a message like RAMDISK: Compressed image found at block 0, or Loading 1440 blocks into ram disk.... You'll see a few more messages and then your a dialog box should appear on your screen.

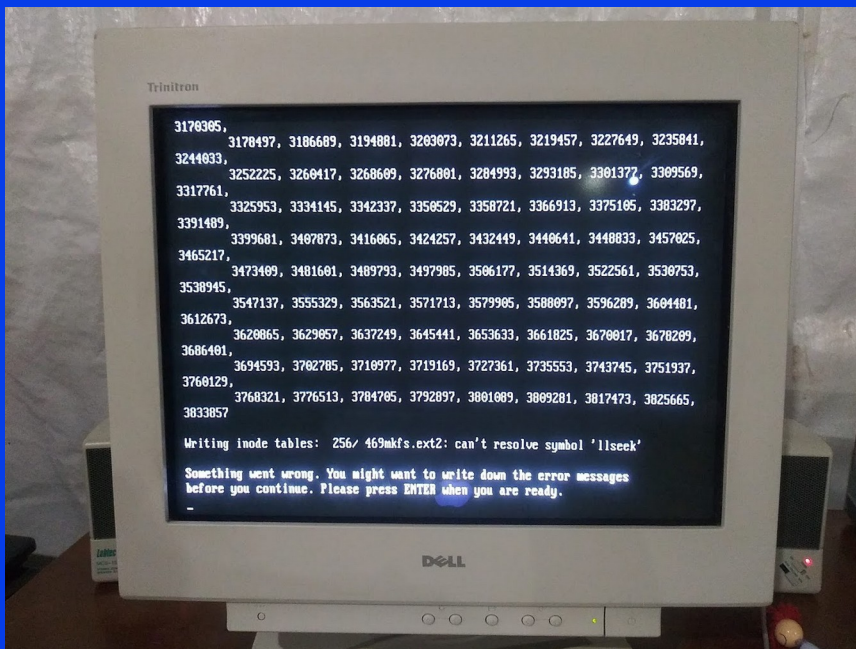
If you see a message like end_request: I/O error, dev 02:00, sector 0 followed by another insert root floppy prompt, you've pressed Enter before you inserted the disk. Do not proceed, reset the system and start again. If you proceed after that message, the system will not use a RAM disk and the installation will not run correctly.

June, 1996

DebianBuzz

• Installation

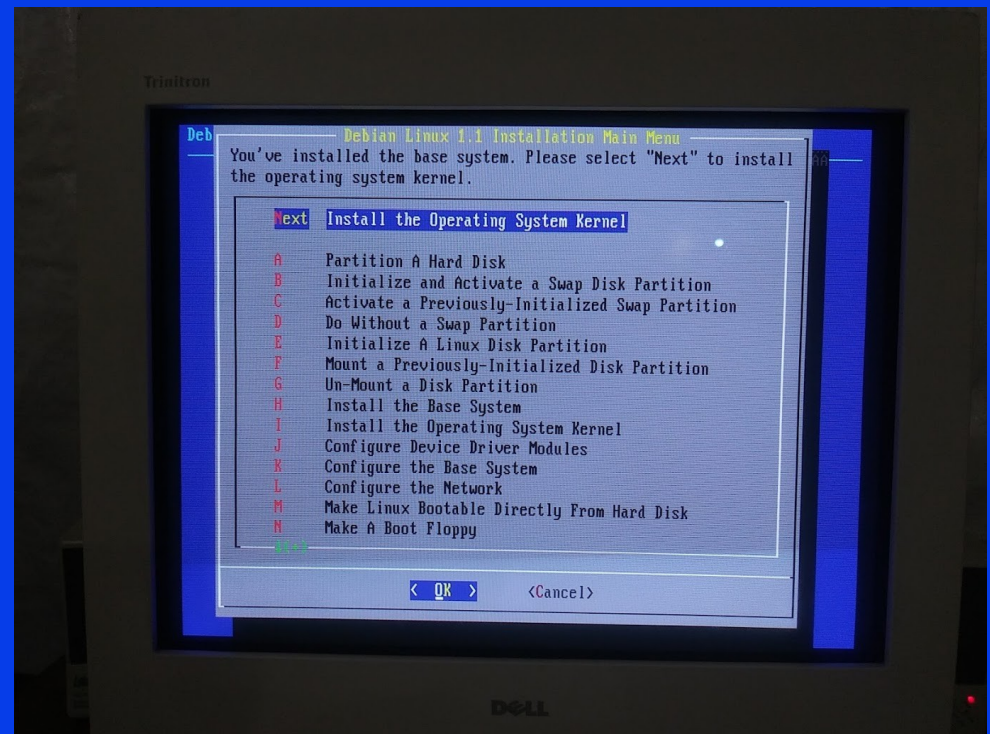
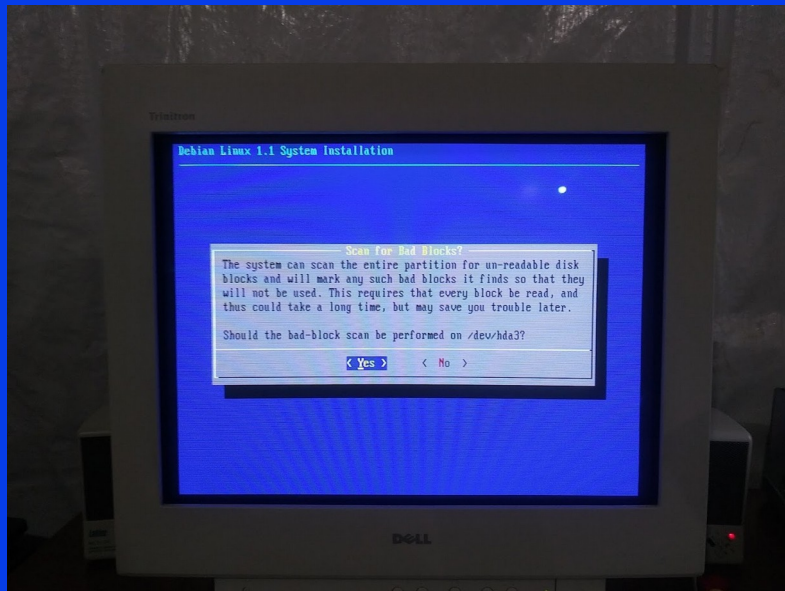
- I decided to use a CF → IDE adapter and 4GB Compact Flash cards
- Unfortunately out of the 3 cards that I bought only one appears to be working...
- First attempt failed due to 2GB IDE limit of my motherboard
- There is this crazy ass thing called EZ-Drive/EZ-BIOS that I tried but it didn't help... (M\$ only...?)



June, 1996

Once upon a time, before debian-installer..

Before the debian team wrote debian-installer there was
this other... installer...



June, 1996

Installation Success

- After 5 floppy disks and a bunch of swapping the installation completed, I rebooted the computer and it booted into Linux!
- Somewhat disappointing though as the default installation does not include an X display server (although one can be installed manually)
- Also my NIC (10 Base-T Kingston KNE20) and even my cdrom was not supported...

```

Welcome to Debian Linux 1.1!

This is the Debian Linux Boot Disk. On most systems, you can go ahead
and press <ENTER> to begin installation. You will probably want to try doing
that before you try anything else. If you run into trouble, or if you already
have questions, press the function key <F1> for quick installation help.

WARNING: You should completely back up all of your hard disks before
proceeding. The installation procedure can completely and
irreversibly erase them! If you haven't made backups yet, remove the
floppy from the disk drive and press <RESET> or <Control-Alt-Del>
to get back to your old system.

Debian Linux comes with ABSOLUTELY NO WARRANTY, to the extent
permitted by applicable law. For copyright information, press <F5>.

This boot floppy installs the Linux kernel version 2.0.0.

Press <F1> for help, or <ENTER> to boot!

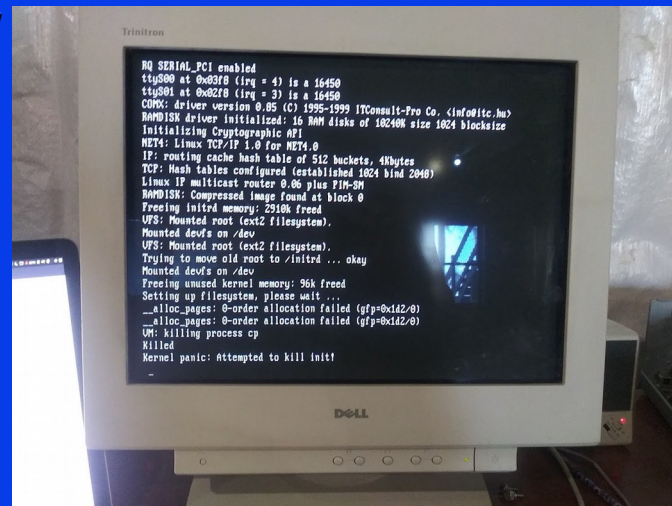
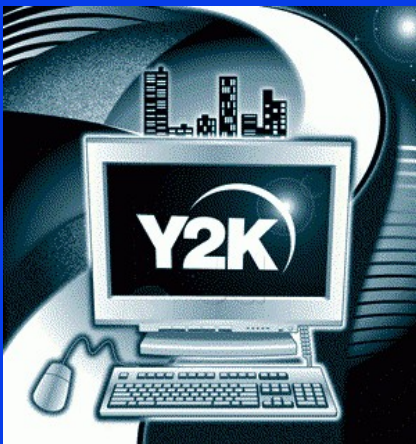
boot: _
```



Second attempt

• Debian 3.1 Sarge

- Next I began looking at what *could* run on this ancient machine...
- Debian GNU/Linux 3.1 (a.k.a. sarge) was released on 6th of June, 2005
- Security updates have been discontinued as of the end of March 2008
- Many more packages than Debian Buzz...
- Uses debian-installer! Also has a netinst image (almost feels like a “modern” release of Debian!!)
- Unfortunately I didn’t look at the Minimum hardware requirements and received a kernel panic while setting up the initial ramdisk filesystem... (not enough RAM...):
<https://www.debian.org/releases/sarge/i386/ch02s05.html.en>
- Installation Manual
- <https://www.debian.org/releases/sarge/i386/>



June, 2005

Third attempt

• Debian 3.0 Woody

- Turns out the previous version is what I wanted as it requires only 12MB of RAM FTW!
- DebianWoody was released on July 19th 2002
- Does not have a netinst image so you have to use a full sized 700MB cdrom ISO to install...
- Does not use debian-installer...
- Many challenges ahead...



← → ↺ ⌂ <https://lists.debian.org/debian-devel-announce/2001/06/msg00014.html>

Flathub Outlook 2019 Release Archive ... Creationist Answer to... Aaron Johnson DuckDuckGo

[\[Date Prev\]](#) [\[Date Next\]](#) [\[Thread Prev\]](#) [\[Thread Next\]](#) [\[Date Index\]](#) [\[Thread Index\]](#)

Debian 3.0 (woody) Freeze Begins

- To: debian-devel-announce@lists.debian.org
- Subject: Debian 3.0 (woody) Freeze Begins
- From: Anthony Towns <ajt@debian.org>
- Date: Sun, 1 Jul 2001 11:04:48 +1000
- Message-id: <20010701110448.C24509@azure.humbug.org.au>
- Mail-followup-to: debian-devel-announce@lists.debian.org

Hello world, and welcome to a new week, a new month, and a new phase of woody's development cycle.

Welcome to the woody freeze.

As previously proposed, the freeze will proceed in four phases: first policy will be frozen, followed by the base system, followed by standard installs, and concluding with the remainder of Debian. The aim of this first part of the freeze is to finalise our expectations of the release (what we want packages to look like, what architectures we're going to release) and to prepare ourselves for the freezing the base system by ensuring that the base system is releasable.

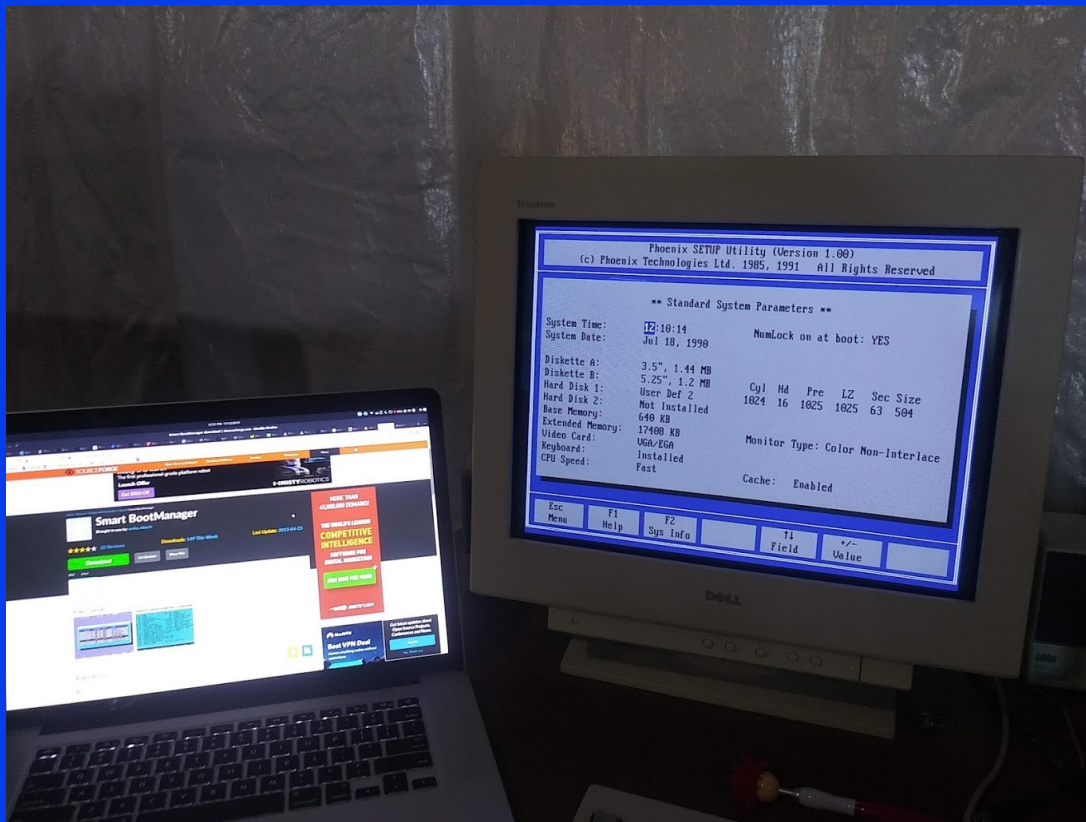
Note that this does *not* involve a freeze on package development yet: bugfixes, and new features are still welcome, and will continue being added to woody in the usual way. What it does mean is that your packages will be frozen in the near future, so now is probably a good time to limit yourself to only introducing new features that have already been heavily tested upstream, and fixing bugs.



July, 2002

CD-ROM boot issues...

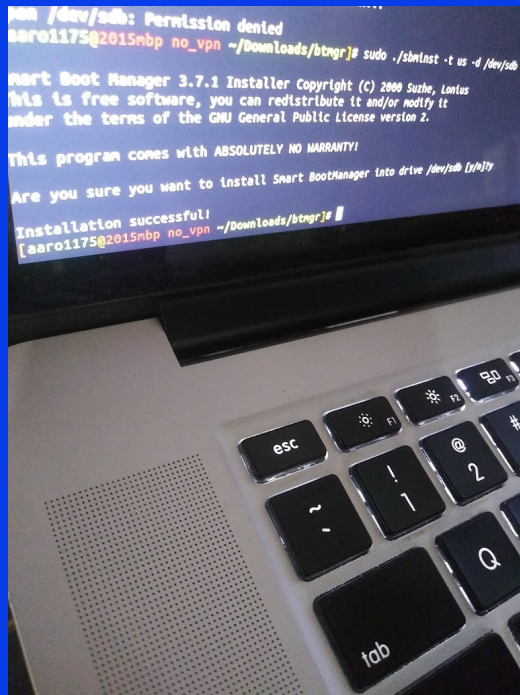
- This PC is so old I can't even boot from a CD-ROM directly... The CMOS/BIOS doesn't even know that the CD-ROM is attached...
- So... the google lead me to Smart BootManger...



July, 2002

Smart BootManager

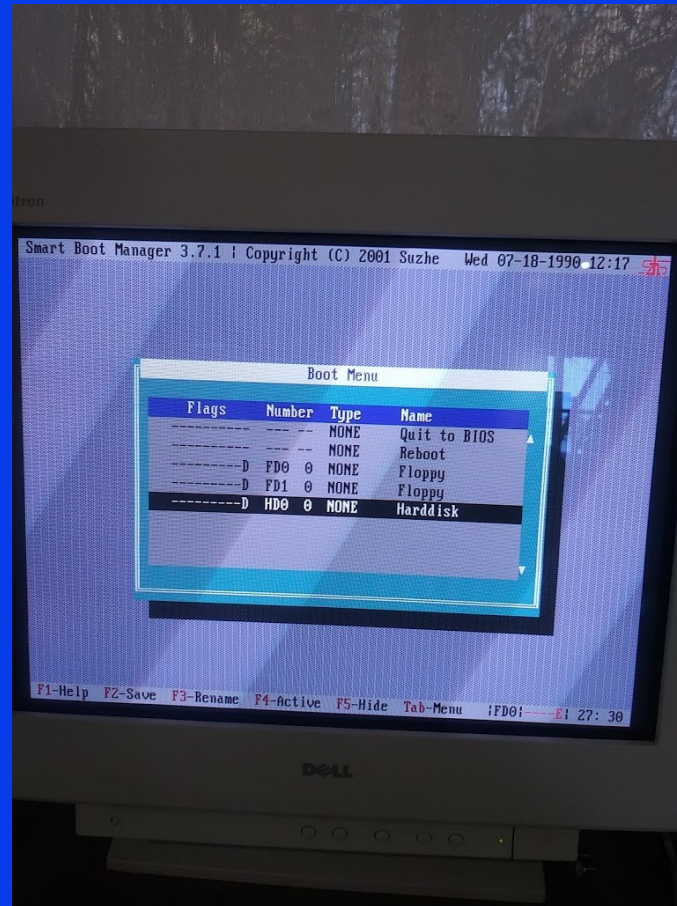
- Smart BootManager will let you boot from a CD-ROM on older systems that do not support CD-ROM booting (or at least that's what the Internet told me...)
- Holy shit this thing actually has a installer compiled for Linux and it just worked!
- Wrote the image to a floppy using my USB 3.5" floppy, done!



July, 2002

Smart BootManager

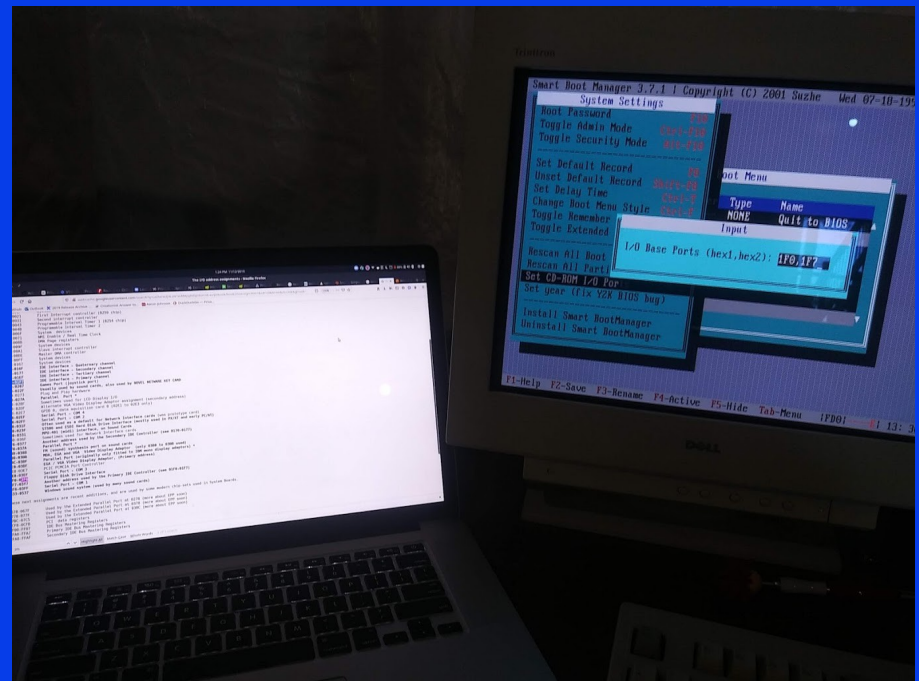
- It booted... Awesome!
- Now I'll just choose CD-ROM, down, down, down...
- Wait, wtf... why isn't it listed...!



July, 2002

Smart BootManager

- Holy shit... I have to what...?
- Enter the I/O ports... by... hand...???
- Okay so google says...



Boot from CD-ROM

Smart BootManager supports booting from almost all kinds of IDE ATAPI CD-ROM, including PCMCIA CD-ROM. But some special IDE controllers may have different I/O ports, which prevent Smart BootManager from finding the CD-ROM. In this case, you can set the I/O ports by hand. Run the command "Set CD-ROM I/O Ports" (in System Settings Menu). An input box will appear to let you input the I/O ports. Each IDE controller has two I/O ports, e.g. 0x1F0,0x3F6 (the master IDE controller). Input those I/O ports exactly in the following format:

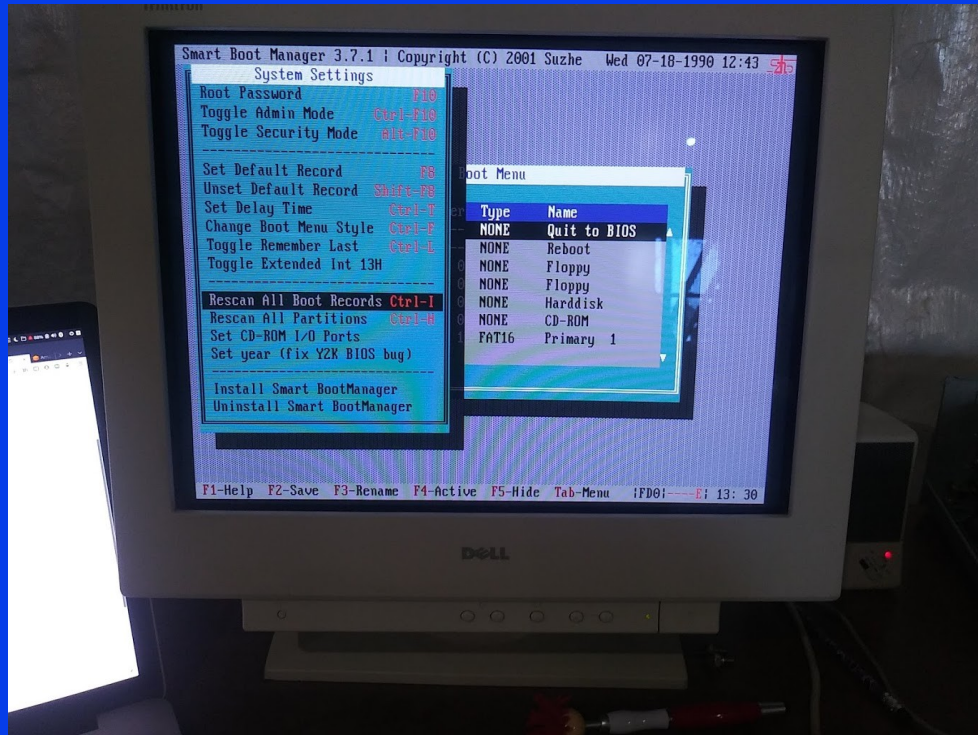
1F0,3F6 (Uppercase hex numbers with a comma in the middle)

After entering the I/O ports, you must use the command "Rescan All Drives" (Ctrl-I) to find the CD-ROM.

When you boot a CD disc with multiple boot images, there will be a menu to let you choose an image to boot.

Smart BootManager

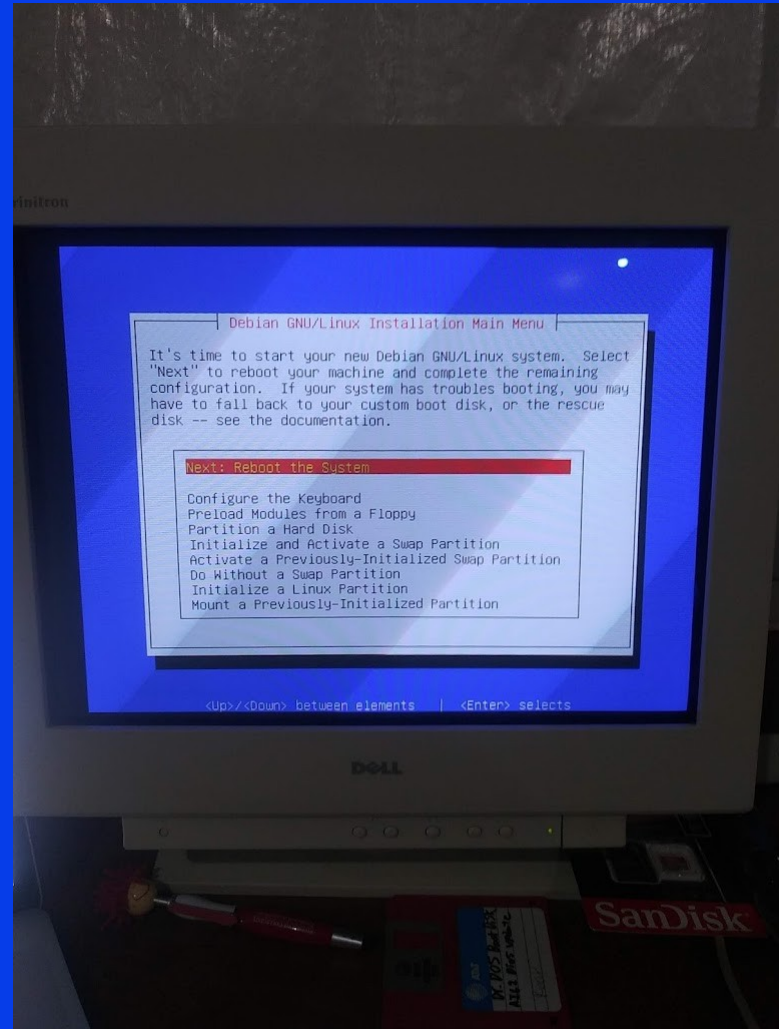
- Worked! Magic!



July, 2002

Installtion Complete!

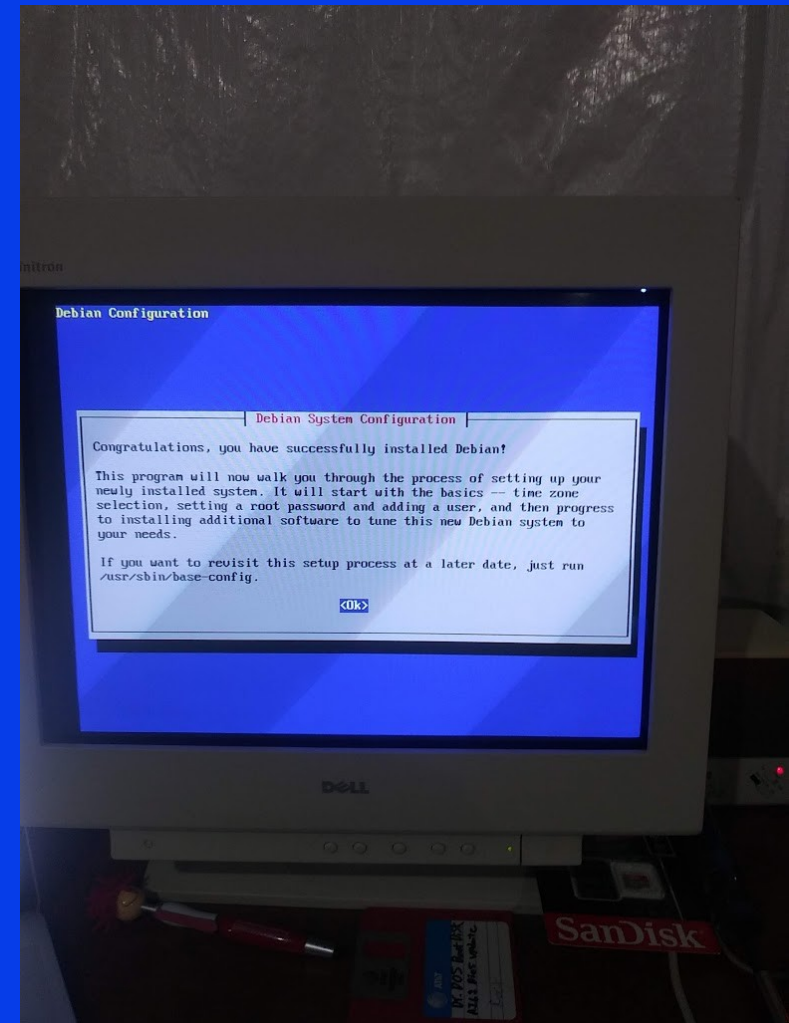
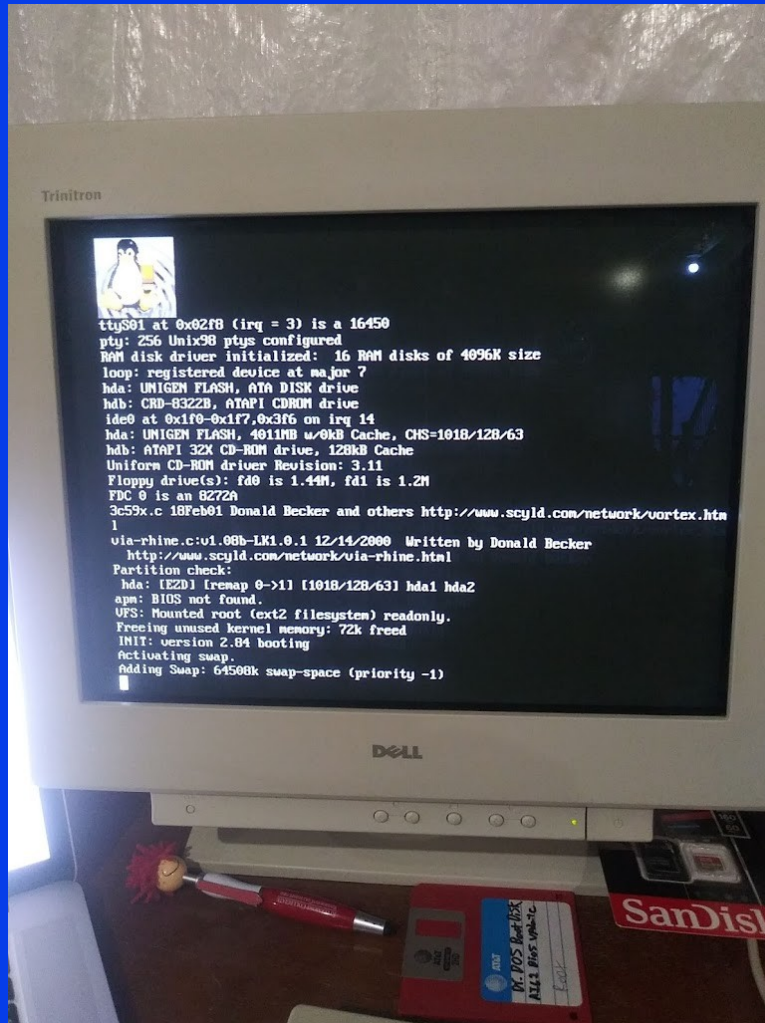
- The installation of Debian Woody from CD took about 2 hours to complete which isn't too bad in book



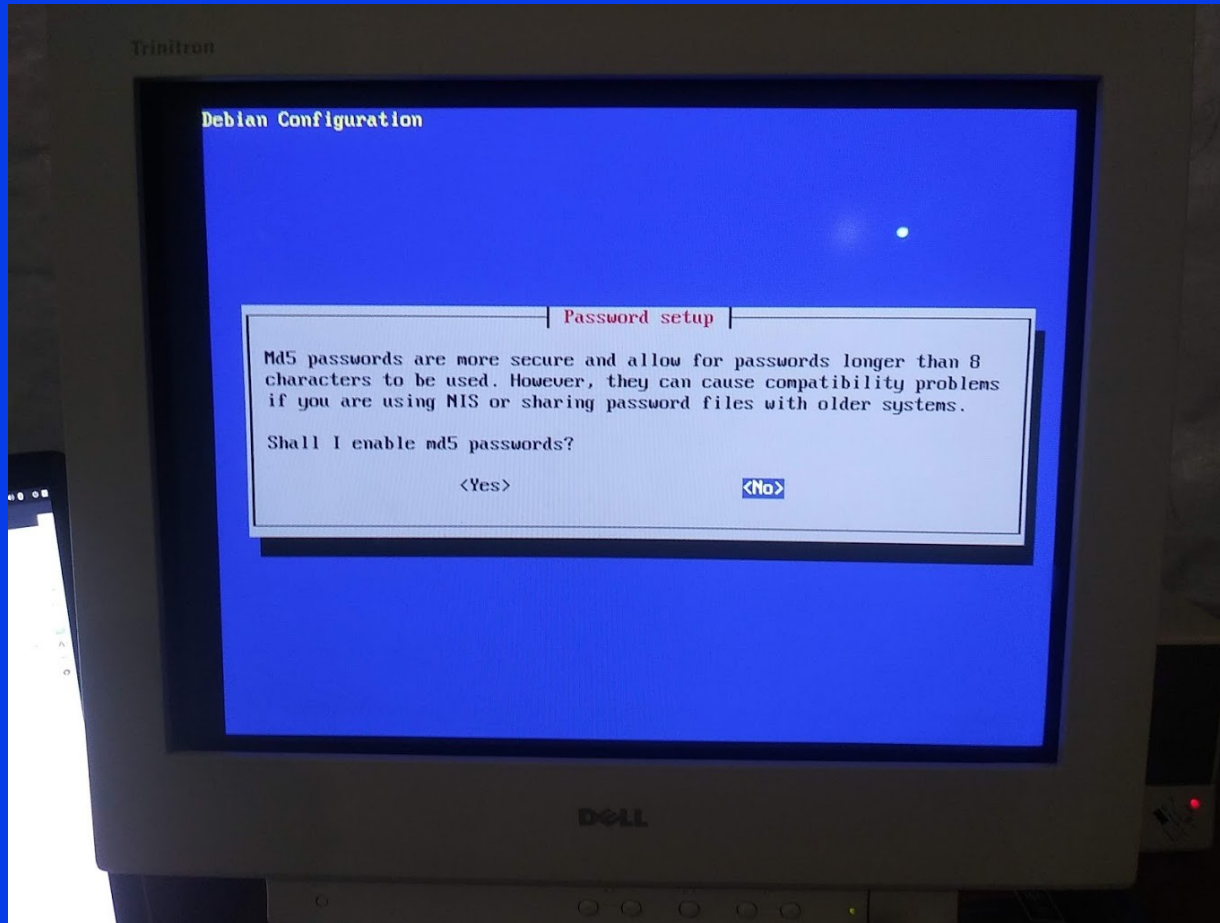
July, 2002

First Boot

- First boot took almost 30 minutes to complete, but it did do some post installation steps...



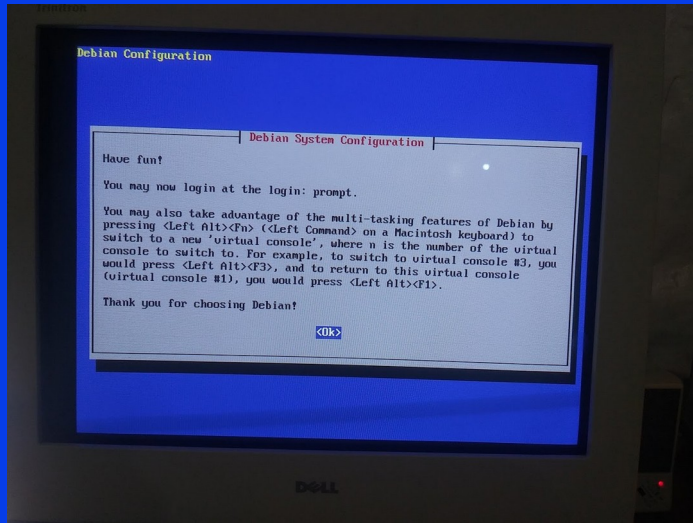
Md5 passwords FTW!



July, 2002

Success

- Still need to run tasksel and dselect but meh...



July, 2002